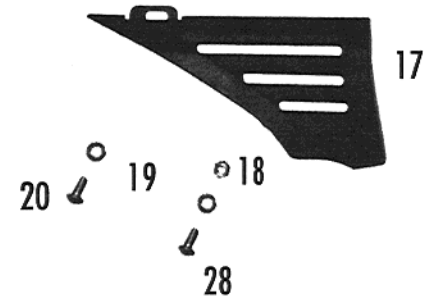
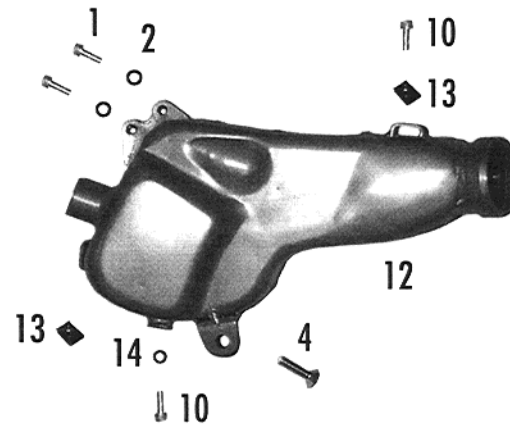
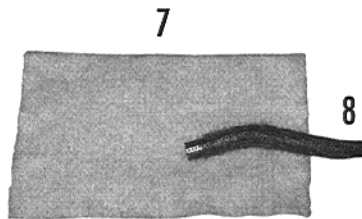
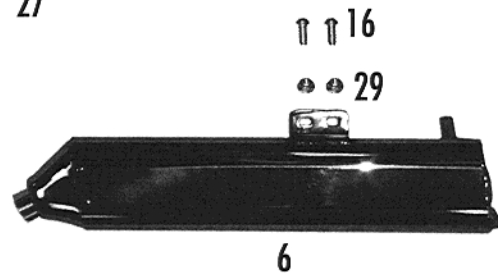
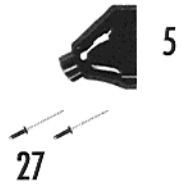
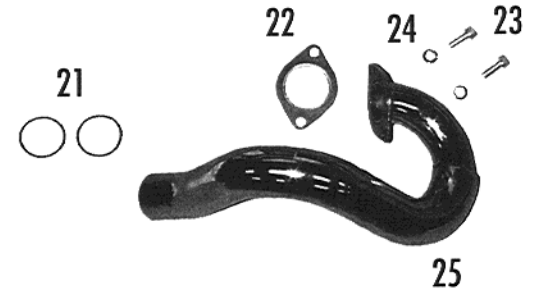
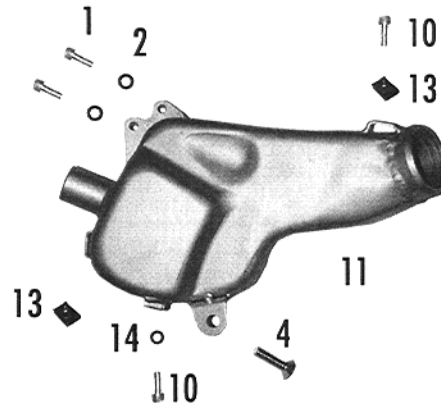
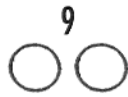
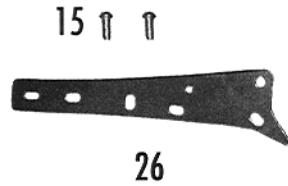
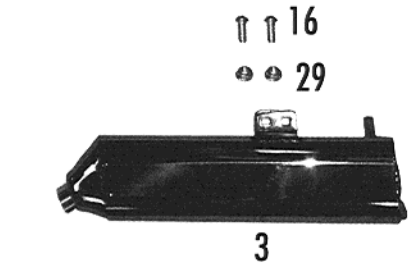


Escape / Exhaust



Nº	DESCRIPCION	280cc	125cc	200cc	249cc	321cc	Cant.
1	Allen 6x20 / Screw, bolt allen 6x20	T0306020					2
2	Arandela plana 6x12x1,5 / Flat washer 6x12x1.5	T4006012					2
3	Silencioso final / Final silencer		BT250126002	BT250126002	BT250126002		1
4	Allen con. 8x30 / Cone screw, bolt allen 8x30	T0408030					2
5	Cazoleta final silencioso / Cazoleta silencer final	BT280126100					1
6	Silencioso final / Final silencer	BT280126002				BT280126002	1
7	Fibra silencioso / Silencer fibre	BT280026108	BT250026108	BT250026108	BT250026108	BT280026108	1
8	Tubo inter. Silen./ Silencer inside tube	BT280026107	BT250026107	BT250026107	BT250026107	BT280026107	1
9	Torica silen.final DNB 27. 5x3 / O`ring silencer	C280002					2
10	Allen 6x14 / Screw, bolt allen 6x14	T0306014					2
11	Silencioso intermedio / Silencer interval		BT120126020	BT120126020			1
12	Silencioso intermedio / Silencer interval	BT280126020			BT280126020	BT280126020	1
13	Tuerca nut enjaulada M6 / Cage nut M6	T2606000					2
14	Arandela 6x16 / Washer 6x16	T4006016					1
15	ULS 6x14 / Screw, bolt ULS 6x14	T0556014					2
16	ULS 6x20 / Screw, bolt ULS 6x20	T0556020					2
17	Protector escape / Exhaust protector	BT280026021					1
18	Tuerca M5 / Nut M5	T2005002					1
19	Arandela 5x12 / Washer 5x12	T4005012					2
20	ULS 5x12 / Screw, bolt ULS 5x12	T0505012					1
21	Torica silen. Int. 44. 05x3.53/ O`ring interval silencer	C290000					2
22	Junta tubo escape / Exhaust gasket	BT27926003					1
23	Allen 8x20/ Srcew, bolt allen 8x20	T0308020					2
24	Arandela glober 8x14x2 / Glober washer 8x14x2	T4008314					2
25	Curva escape / Exhaust	BT280026001	BT200026001	BT20826001	BT280026001	BT280026001	1
26	Soporte alum. silencioso trial/ Silencer trial alum. suport	BT280126018					1
27	Remache cazoleta final/ Rivet end cazoleta	BE250026032					4
28	ULS 5x16 / Screw, bolt ULS 5x16	T0505016					1
29	Tuerca con arandela M6 / Flange nut M6	T2206000					2