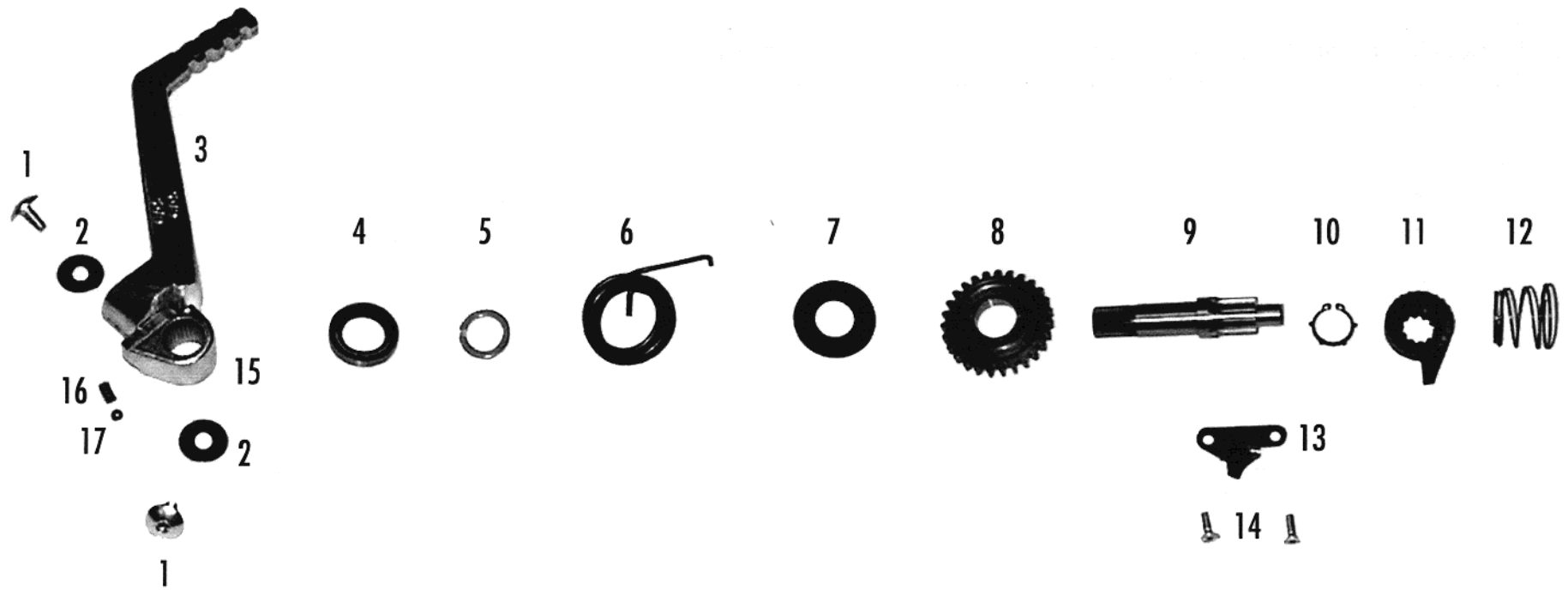


# Pedal arranque / Kickstart



Nº	DESCRIPCION	280cc.	125cc.	200cc.	249cc.	321cc.	Cant.
1	Tornillo 6x12 cabota tork / <i>Screw, bolt allen special</i>	T0316012					2
2	Arandela 6x18x1.5 DIN 9021 / <i>Washer plane 6x18x1.5</i>	T4006018					2
3	Cto.pedal arranque alum.y muñ. / <i>Cpt. Kickstart pedal</i>	ME250036060					1
4	Reten arranque 18-28-7 822N / <i>Oil seal kickstart</i>	M02627001					1
5	Tope aluminio 4.5x18x25 arran. / <i>Top aluminium kickstart</i>	M02612002					1
6	Muelle retorno pedal / <i>Pedal come back spring</i>	MT27836007	M02613001	M02613001	MT27836007	MT27836007	1
7	Arandela arranque 46x18.6x1 / <i>Washer kickstart</i>	M02614002					1
8	Piñón arranque / <i>Pinion kickstart</i>	MT27836002					1
9	Eje arranque 98 / <i>Kickstart axle</i>	MT27836003					1
10	Seeger E20 DIN983 / <i>Seeger E20</i>	MT27836052					1
11	Trinquete arranque / <i>Kickstart pawl</i>	ME250126004					1
12	Muelle trinquete arranque / <i>Kickstart pawl spring</i>	ME25636006					1
13	Platina trinquete arranque 98 / <i>Kickstart pawl worktable</i>	MT27836005					1
14	Hexagonal 5x20 (12.9) DIN 933 / <i>Hexagonal 5x20</i>	T0105020					2
15	Muñequilla pedal arranque / <i>Kickstart trunnion</i>	ME250036061					1
16	Muelle muñequilla / <i>Kickstart base spring</i>	ME250036066					1
17	Bola muñequilla / <i>Kickstart base ball</i>	ME250036062					1